



GUIDE TO MN BUMBLE BEES II

Common

This guide is only for **males** (13 antennal segments, 7 abdominal segments, mostly common late in the season, no pollen baskets, beards on their mandibles). **First determine which yellow highlighted section your bee is in, then go through numbered characters to find a match.** See if your bee matches the color patterns shown and the description in the text. Color patterns can vary. More detailed keys are available at discoverlife.org. Join the search for bumble bees with www.bumblebeewatch.org Ab=Abdominal band Ant= Antennal segment by Elaine Evans, University of Minnesota www.beelab.umn.edu www.befriendingbumblebees.com

Thorax with yellow near wing base AND 3rd abdominal segment black or orange

1. Black on sides of 2nd Ab, yellow or rusty in center



Bombus bimaculatus
two-spotted bumble bee



2nd Ab with yellow in middle, black on sides. Yellow often in a "W" shape. Eyes not large.



Bombus griseocollis
brown-belted bumble bee



2nd Ab with yellow in middle bordered by rusty brown in a swooping shape. Large eyes.



Bombus impatiens
common eastern bumble bee



Light lemon yellow hairs on top of head and on thorax.



Bombus rufocinctus
red-belted bumble bee

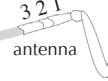
Eyes slightly enlarged. Color pattern variable.

4. 2nd Ab entirely yellow and Ab 3-6 black



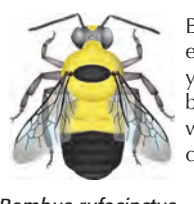
Bombus vagans
half-black bumble bee

Ant 3 is long. Black hair on thorax limited to central spot.



Bombus sandersoni
Sanderson's bumble bee

Ant 3 is short. Short hairs on back of ant segments 3 and 4. Many black hairs on thorax. Smaller than vagans.



Bombus rufocinctus
red-belted bumble bee

Eyes slightly enlarged. Some yellow in black band between wings. Variable color patterns.



Bombus affinis
rusty patched bumble bee

Center spot on thorax with sometimes faint V shaped extension back from the middle.

5. 2nd Ab brown centrally

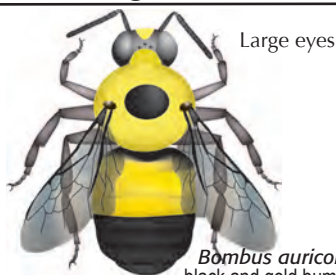
Thorax with yellow near wing base AND abdomen segments 1-3 yellow

1. Black spot in center of thorax



Bombus citrinus
lemon cuckoo bumble bee

Not large eyes. Very short cheek.



Bombus auricomus
black and gold bumble bee

Large eyes

2. No obvious spot on thorax.



Bombus perplexus
confusing bumble bee

Variable color patterns.

Thorax with black stripe between wings

1. Ab 1-4 yellow



Bombus fervidus
yellow bumble bee

Black on top and front of head. Sides of thorax yellow.



Bombus borealis
boreal bumble bee

Yellow on top and front of head. Sides of thorax with brown hairs. 5th Ab may be black.



Bombus pennsylvanicus
American bumble bee

Often with orange on 7th Ab. Sides of thorax with dark hair.



Bombus ternarius
tricolored bumble bee

Rear 1/2 of thorax yellow. Common in northern MN.



Bombus huntii
Hunt's bumble bee

Rear half of thorax with some black hairs. Only in Western MN.

Rear half thorax is black

1. 1st ab black



Bombus terricola
yellowbanded bumble bee

Smaller and stouter than many other bumble bees. Fringe of yellow hairs near end of abdomen.



Bombus insularis
indiscriminate cuckoo bumble bee

Ab seg 1-3 black.

2. 1st ab yellow



Bombus bohemicus
Ashton's bumble bee

Ab seg 1 yellow.



Bombus flavidus
Fernalde cuckoo bumble bee

Ab seg 6-7 with orange. Variable color. Often with yellow on rear half of thorax. Sometimes Ab 2-3 yellow